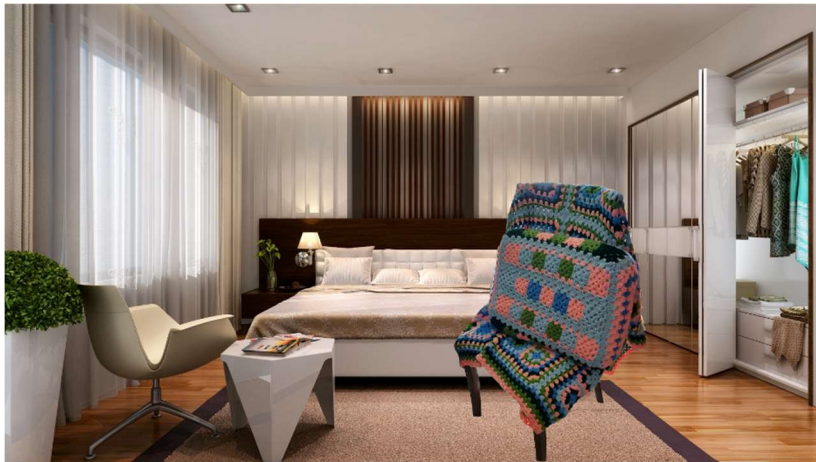


Granny Square Pillow & Blanket Set



<ul style="list-style-type: none"> ○ D (Dark Green) ○ E (Light Green) 	<ul style="list-style-type: none"> ● Dc dec – Double crochet decrease ● Sc – Single crochet
---	---

Special Stitches

- Beg Shell: Ch 3, 2 dc in ch-sp (or st)
- Shell: 3 dc in ch-sp (or st)
- Cor Shell: 3 dc, ch 2, 3 dc in ch-sp (or st)
- Beg Cor Shell: Beg shell, ch 2, shell in ch-sp (or st)
- dc dec: yo, insert your hook into the next stitch yo, Draw the yarn through the stitch, Yo, Draw the yarn through the first 2 loops on your hook.
- Joining shell: in Block seam dc in the ch-2 sp before the seam dc dec in same sp and in ch-2 sp dc in same ch-2 sp as last leg of dec.

Pattern Notes

- Weave in loose ends as work progresses
- Join with sl st as indicated unless stated otherwise.
- Ch-3 at the beg of round counts as first dc unless stated otherwise.

Gauge: 4 rnds and 4 shells = 4" [10 cm]

Materials

- H/8-5.00 mm
- Needle
- Medium (worsted (4)) acrylic/wool yarn:
 - A (Dark Blue)
 - B (Light Blue)
 - C (Pink)

Abbreviations

- Ch – Chain
- Dc – Double Crochet
- Sp(s) – Space(s)
- St(s) – Stitch(es)
- Beg – Beginning
- Cor – Corner
- Slip Stitch – sl st
- RS – Right side
- Yo – Yarn Over

Blanket

Blocks:

B1 & B9:
Work 4 Small Squares each as follows:
A. 2 rnds of A, 1 rnd each B and C.

B. 1 rnd of E, D, C and B.
 C. 1 rnd of D, E, C and B.
 D. 2 rnds of B, 1 rnd each A and C.
Border: 1 rnd each A, D, C, E, B.

B2, B4, B6, B8, B10, & B12:
 Work 4 Small Squares each as follows:
 A. 1 rnd of A, B, E and C.
 B. 1 rnd of D, E, A and B.
 C. 1 rnd of E, D, A and B.
 D. 1 rnd of B, A, E and C.
Border: 1 rnd each A, D, C, E, B.

B3 & B7:
 Work 4 Small Squares each as follows:
 A. 2 rnds of A, 1 rnd each D and C.
 B. 1 rnd of A, D, C and B.
 C. 1 rnd of B, E, C and B.
 D. 2 rnds of B, 1 rnd each D and C.
Border: 1 rnd each A, D, C, E, B.

B5 & B11:
 Work Extra Large Square as follows:
 A. 2 rnds each A and B.
 B. 1 rnd E.
 C. 3 rnds D.
 D. 1 rnd each A, D, C, E, B.

Pillow
Blocks:
B1 & B2: Work 1 large square as follows: A. 2 rnds of A.

B. 3 rnds of B and C.
 C. 1 rnd of A.
 D. 2 rnds of C.
 E. 1 rnd of B

Rectangles:

R1 & R9:
 Work 7 extra small squares as follows:
 A. Work 3:
 (2 rnds of D)
 B. Work 2:
 (2 rnds of E)
 C. Work 2:
 (2 rnds of A)

Small Border: 1 rnd of A, and B

R2, R4, R6, & R8:
 Work 7 extra small squares as follows:
 A. Work 3:
 (2 rnds of B)
 B. Work 2:
 (2 rnds of C)
 C. Work 2:
 (2 rnds of E)

Small Border: 1 rnd of C, and B

R3 & R7:
 Work 7 extra small squares as follows:
 A. Work 3:
 (2 rnds of E)
 B. Work 2:
 (2 rnds of C)
 C. Work 2:
 (2 rnds of D)

Small Border: 1 rnd of D, and B

R5:

Work 7 extra small squares as follows:

- A. Work 3:
(2 rnds of C)
- B. Work 2:
(2 rnds of A)
- C. Work 2:
(2 rnds of B)

Small Border: 2 rnds of B.

Instructions

Extra Small Square (Make 63 referencing to colors of Pillow Rectangle)

Rnd 1: (RS) With first Color, ch 4, *join* (see pattern notes) in first ch to form a ring, *beg shell* (See Special Stitches) in ring, ch 2, [*shell* (See Special Stitches), ch 2 in ring] 3 times, join in 3rd ch of beg ch-3, FO if new color is required. (4 shells, 4 ch-2 sp)

Rnd 2: (RS) Sl st in each of next 2 dc and in ch-2 sp or join next next color in any ch-2 sp, beg cor shell in same sp, ch 1, [*cor shell* (See Special Stitches) in ch-2 sp, ch 1] 3 times, join in 3rd ch of beg ch-3, FO if new color is required. (4 cor shells, 4 ch-1 sp)

Rectangle Assembly

Arrange the extra small squares as shown in placement diagram. Holding extra small squares with RS Facing, whipstitch edges of squares tog.

Small Border

Rnd 1: (RS) Join first color in any ch-2 sp with the short end towards the future work, beg corner shell, ch 1, shell, ch 1, cor shell, ch 1, {[shell, ch 1, *Joining shell* (see Special Stitches) in block seam, ch 1] rep until you reach corner}, cor shell, ch 1, shell, ch 1, cor shell, ch 1, rep inside {}, join in 3rd ch of beg ch-3, FO if new color is required. (4 cor shells, short ends: 2 shells, 4 ch-1 sps, long ends: 28 shells, 30 ch-1 sps)

Rnd 2: (RS) Sl st in each of next 2 dc and in ch-2 sp or join next next color in any ch-2 sp, beg cor shell in same sp, ch 1, shell in next ch-1 sp, ch 1, [shells in next ch-1 sp, ch 1] across to next ch-2 sp, {cor shell in ch-2 sp, ch 1, [shells in next ch-1 sp, ch 1] across to next ch-2 sp } 3 times, join in 3rd ch of beg ch-3. (4 cor shells, short ends: 4 shells, 6 ch-1 sps, long ends: 30 shells, 32 ch-1 sps)

Small Square (Make 40 referencing to colors of Blanket)

Rnds 1 – 2: (RS) rep rnds 1 – 2 of extra small squares. (4 cor shells, 4 ch-1 sp)

Rnd 3: (RS) Sl st in each of next 2 dc and in ch-2 sp or join next next color in any ch-2 sp, beg cor shell in same sp, ch 1, shell in next ch-1 sp, ch 1, [cor shell in next ch-2 sp, ch 1, shell in next ch-1 sp, ch 1] 3 times, join in 3rd

ch of beg ch-3, FO if new color is required. (4 cor shells, 4 shells, 8 ch-1 sps)

Rnd 4: (RS) Sl st in each of next 2 dc and in ch-2 sp or join next next color in any ch-2 sp, beg cor shell in same sp, ch 1, shell in next ch-1 sp, ch 1, [shells in next ch-1 sp, ch 1] across to next ch-2 sp, {cor shell in ch-2 sp, ch 1, [shells in next ch-1 sp, ch 1] across to next ch-2 sp} 3 times, join in 3rd ch of beg ch-3, FO if new color is required. (4 cor shells, 8 shells, 12 ch-1 sp)

Block Assembly

Arrange the extra small squares as shown in Blanket placement diagram. Holding extra small squares with RS Facing, whipstitch edges of squares tog.

Border

Rnd 1: Join first color in any ch-2 sp, beg cor shell in ch-2 sp, ch 1, {[shell, ch 1,] in each of next 3 ch-1 sps, joining shell in next 2 ch-2 sps, ch 1, [shell, ch 1] in each of next 3 ch-1 sps), cor shell in next ch-2 sp, ch 1} rep {} 3 times, join in 3rd ch of beg ch-3, FO if new color is required. (4 cor shells, 28 shells, 32 ch-1 sp)

Rnd 2: (RS) Sl st in each of next 2 dc and in ch-2 sp or join next next color in any ch-2 sp, beg cor shell in same sp, ch 1, shell in next ch-1 sp, ch 1, [shells in next ch-1 sp, ch 1] across to next ch-2 sp, {cor shell in ch-2 sp, ch 1, [shells in next ch-1 sp, ch 1] across to next ch-2 sp } 3 times, join in 3rd ch of beg ch-3. (4 cor shells, 32 shells, 36 ch-1 sp)

Rnds 3 – 5: (RS) Rep rnd 2. (4 cor shells, 44 shells, 48 ch-1 sp)

Large Square (Make 2 referencing to colors of Pillow Blocks)

Rnds 1 – 4: (RS) Rep 1 – 4 of Small Square.

Rnds 5 – 12: (RS) Rep 4 of Small Square. (4 cor shells, 40 shells, 44 ch-1 sp)

Extra Large Square (Make 2 referencing to colors of Blanket Blocks)

Rnds 1 – 4: (RS) Rep 1 – 4 of Small Square.

Rnds 5 – 13: (RS) Rep 4 of Small Square. (4 cor shells, 44 shells, 48 ch-1 sp)

Pillow:



Pillow Assembly

Large Block sew edge on one side as shown in Pillow Placement Diagram.

Arrange the Rectangles and block as shown in placement diagram. Holding extra small squares with RS Facing, whipstitch edges of squares tog.

Leaving one side open.

Strap

Join with slip knot in ch 1 sp in one side 3 sc in sp.

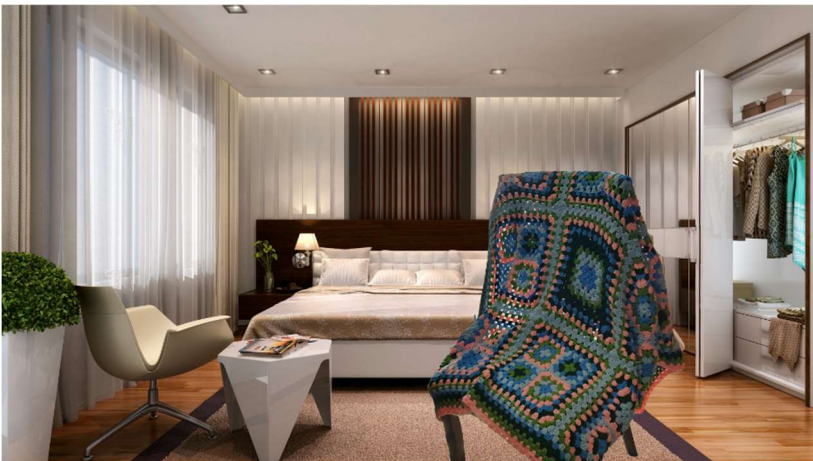
Row 1: Sc in each st across, turn. (3 sts)

Row 2: Rep row, until it is close. (3 sts) (rows 2 to 5)

Row 6: Ch 10, sl st in last st. (3 sts, 10-ch sp)

Sew button on the corner of the side edge.

Blanket:



Blanket Assembly

Arrange the 12 Blanket Blocks as shown in Blanket Diagram. With RS facing, whipstitch Blocks tog.

Blanket Border

Rnd 1: Join A in any ch-2 sp, beg cor shell in ch-2 sp, ch 1, (shell, ch 1) in each ch-1 sp and *[Joining shell in seam, ch 1, (shell, ch 1) in each ch-1 sp] across to the next ch-2 sp**, (cor shell, ch 1) in corner ch-2 sp, (shell, ch 1) in each ch-1 sp rep from * around, ending last rep **, join in 3rd ch of beg shell, FO. (4 cor shells, short ends: 76 shells, 78 ch-1 sps, long ends: 102 shells, 104 ch-1 sps)

Rnd 2: Join D in any ch-2 sp, beg cor shell in corner ch-2 sp, ch 1, *[shell in ch-1 sp, ch 1] across to next ch-2 sp**, cor shell in corner ch-2 sp, ch 1, rep from * around ending last rep **, join in 3rd ch of beg shell, FO. (4 cor shells, short ends: 78 shells, 80 ch-1 sps, long ends: 104 shells, 106 ch-1 sps)

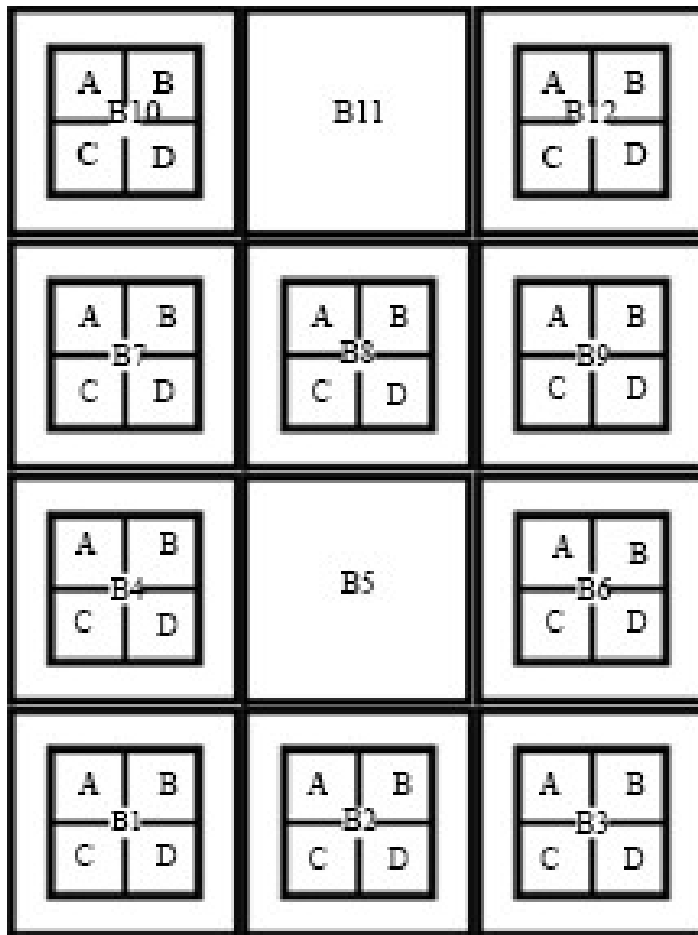
Rnd 3: Sl st in next 2 dc, sl st in next ch-2 sp, rep rnd from beg shell, FO. (4 cor shells, short ends: 80 shells, 82 ch-1 sps, long ends: 106 shells, 108 ch-1 sps)

Rnd 4: With E, Rep rnd 2. (4 cor shells, short ends: 82 shells, 84 ch-1 sps, long ends: 108 shells, 110 ch-1 sps)

Rnd 5: Rep rnd 3. (4 cor shells, short ends: 84 shells, 86 ch-1 sps, long ends: 110 shells, 112 ch-1 sps)

Rnd 6: With C, Rep rnd 2. (4 cor shells, short ends: 86 shells, 88 ch-1 sps, long ends: 112 shells, 114 ch-1 sps)

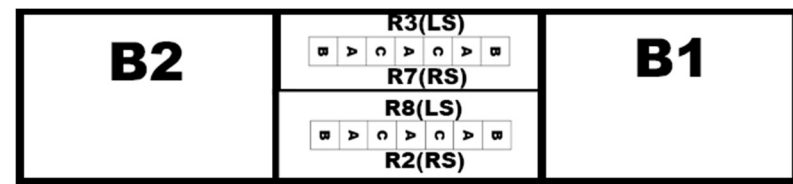
Rnd 7: Rep rnd 3 (4 cor shells, short ends: 88 shells, 90 ch-1 sps, long ends: 114 shells, 116 ch-1 sps)



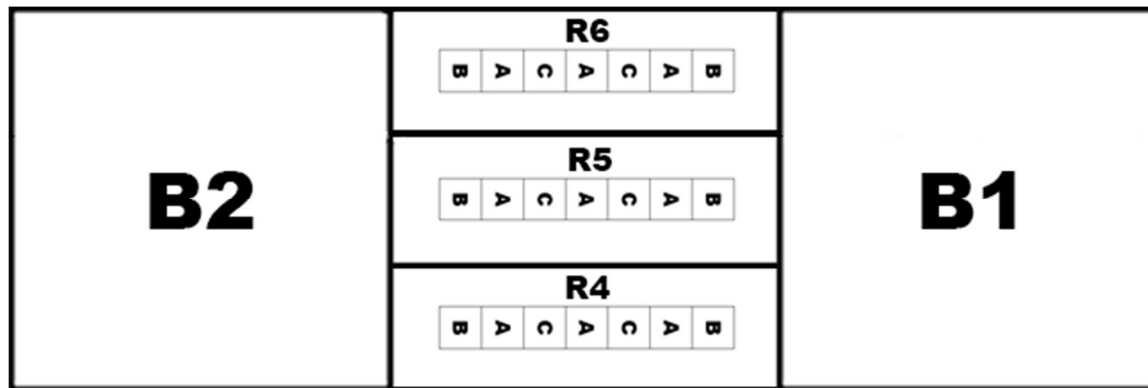
Blanket
Placement Diagram



Pillow Bottom
Placement Diagram



Pillow Side
Left Side (LS) & Right Side (RS)
Placement Diagram



Pillow Top
Placement Diagram